



**WHIRLER**

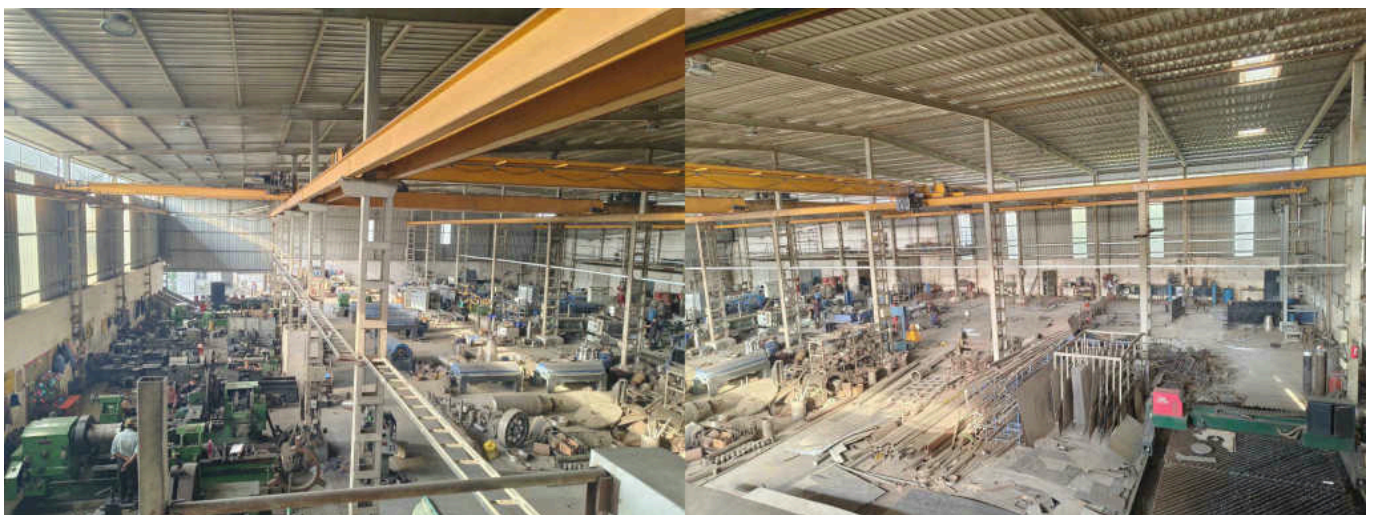
Reference : 2025-03-17/2923



**WHIRLER**

### Table of Contents

1. Establishment	2
2. Key Figures	2
3. Quality Policy	4
4. Our Esteemed Clients (some of)	5
5. Our Story and History	6
6. Our TimeLine	7
7. We The People	9
8. Imprint	11





**WHIRLER**

WHIRLER INTRODUCTION

CREATED : 1983-11-16  
MODIFIED : 2025-03-17

**WHIRLER CENTRIFUGALS PVT LTD**

L605, GIDC, Odhav, Ahmedabad 382415, Gujarat, India.  
GST : 24AAACW1729RIZX CIN : U29199GJ1990PTC014284

## Establishment

WHIRLER, being an equipment manufacturing company, have numerous products to its portfolio such as, vacuum pumps, water ring vacuum pumps, fluid couplings, peeler centrifuges, decanter centrifuges, rotary dryers, sludge dryers, decanters, laundry machines and so on. With progress of India and growth of its infrastructure needs, Whirler has concentrated its focus to water treatment & solid liquid separation technologies to provide technical, efficient and performant solutions to the industry.

**ENVIRONMENTAL POLICY : ISO 14001:2015** We understand ourselves as a technology company committed to environmental protection. Our responsibility for the environment is not limited to the conception of our products & services but also includes state-of-the art manufacturing technology to save the environment and conserve our resources.

**QUALITY POLICY : ISO 9001:2015** Quality determines our thinking and actions in every single subprocess. We consider quality management our driving force to increase our performance, a performance our customers expect from us and we aim to improve it continuously.

**PARTNERSHIPS & PROGRESS** We have worked with Environmental Agencies & Consultants, Project Contractors, Municipal & Government Water Supply Boards to provide best in class product & solutions. Whether your need is simple equipment or Complete projects, We work hand in hand to achieve the best economical, efficient, environment friendly and robust solution to the given problem.

WHIRLER has worked with numerous organizations, from defense sector to public utility sector in government and semi government organizations, hospitals, to prominent chemical, pharma and industrial establishments. Our machines are installed and running in every corner of the country for the last 40+ years.

Our technological focus is primarily in Solid Liquid Separation, Drying and Vacuum Technology. We have constantly strived to create environmentally efficient products, with longer life time through strong after sales service and spare part support.

## Key Figures

Third generation of leadership...

- 10+ Engineers
- 10+ Office Staff
- 80+ Employees
- 100+ Vendors
- 20 cr+ Revenue
- Growing at 25%+ y-o-y basis
- 10+ types of Products, 500+ models
- 3 Production Units
- 15%+ Exports
- 300+ Production Capacity
- 50,000+ Sq. Ft.
- 6000+ Installations
- 100+ Consultants



**WHIRLER**

## WHIRLER INTRODUCTION

CREATED : 1983-11-16  
MODIFIED : 2025-03-17

## WHIRLER CENTRIFUGALS PVT LTD

L605, GIDC, Odhav, Ahmedabad 382415, Gujarat, India.  
GST : 24AAACW1729R1ZX CIN : U29199GJ1990PTC014284

### Capabilities

- EOT Overhead Cranes : 10 Nos.
- 3000mm x 800 Dia CNC Lathe
- 450mm x 250 Dia CNC Lathe
- 850 x 500 x 500 VMC Machine
- 12 Feet, 10 Feet, 6 Feet Manual Turning Lathe
- CNC VTL Lathe
- CNC Plano Milling Machine
- CNC Plasma Cutting Machine
- CNC Bending Machine
- VMC Machine
- Testing and Quality
- Industrial Centrifuge Test Bench
- Laboratory with Ph Meter, Centrifuge, Vacuum Pump, Particle Size Testing Facility, Turbidity, TDS Testing Machines
- Noise, Vibration, Temperature, Electrical Measurement Machines
- Vernier, Bore Gauge, Wire Gauge etc In process testing equipment
- Dynamic Balancing Machine
- Fabrication area
- CNC Plasma Cutting Machine : 10 Meter x 4 Meter
- 4 Roller CNC Bending Machine
- 100 Tonne Auto Screw Press
- 100 Tonne Vertical Press
- Paint Shop, Buffing, Plastic Media Blasting Facility
- Complete Environment Safe Spares storage

### Quality Objectives

- On-Time Delivery
- Analysis Of Customer complaints
- Non-conformance analysis
- Team activities monitoring
- Planned improvement for Quality and Productivity
- Monitoring safety measures
- Supplier performance review
- Monitoring of continual improvement projects
- Value addition monitoring

## Quality Policy

Whirler Centrifugals Pvt. Ltd. is committed to designing, manufacturing, and supplying high-quality equipment and services that consistently meet or exceed customer expectations and requirements.

Our core principles for achieving this commitment are:

**Customer Focus** : We prioritize understanding and fulfilling the evolving needs of our customers. We strive to build strong, lasting relationships by providing reliable products, exceptional service, and timely support.

**Quality Excellence** : We are dedicated to continuous improvement in all aspects of our operations, from design and procurement to manufacturing, testing, and delivery. We adhere to quality standards and implement effective quality improvement systems to ensure product reliability and performance.

**Process Optimization** : We continuously evaluate and optimize our processes to enhance efficiency, reduce waste, and improve quality. We employ data-driven decision-making and implement lean manufacturing principles to streamline operations.

**Employee Empowerment** : We foster a culture of quality awareness and empower our employees to take ownership of their work. We invest in training and learning to ensure our team possesses the skills and knowledge to maintain the highest standards of quality.

**Compliance and Regulatory Adherence** : We are committed to complying with all applicable legal, regulatory, and industry standards. We maintain robust documentation and implement comprehensive audit programs to ensure compliance.

**Supplier Partnerships** : We establish and maintain strong partnerships with our suppliers, selecting them based on their commitment to quality and reliability. We work collaboratively to ensure the quality of materials and components used in our products.

**Innovation and Technology** : We embrace innovation and invest in advanced technologies to improve our products and processes. We strive to remain at the forefront of centrifuge technology and provide our customers with cutting-edge solutions.

**Environmental Responsibility** : We are committed to minimizing our environmental impact by implementing sustainable practices in our operations. We strive to reduce waste, conserve resources, and comply with environmental regulations.

For Whirler Centrifugals Pvt. Ltd.,

Gopal Patel, Director



Our Esteemed Clients (some of)





**WHIRLER**

WHIRLER INTRODUCTION

CREATED : 1983-11-16  
MODIFIED : 2025-03-17

**WHIRLER CENTRIFUGALS PVT LTD**

L605, GIDC, Odhav, Ahmedabad 382415, Gujarat, India.  
GST : 24AAACW1729R1ZX CIN : U29199GJ1990PTC014284

## Our Story and History

The Company has been started by Late SHRI RAHUL P. PATEL.

He is a Mechanical Engineer of 1976 Batch. He joined, M/s. The Anup Engineering Ltd. Ahmedabad, an engineering division of Kasturbhai Lalbhai (Arvind Mills Ltd.) group.

After joining M/s. Anup as an apprentice engineer in 1976 he grew to be Design and Development In charge of Centrifuge Div. by the time he left the company in Dec, 1980.

He left the job and Ventured in to manufacturing of Hydraulic Fluid Couplings, being the FIRST in India to do so, completely indigenously. The unit is still in operation by the name M/s. Parag Engineering. During the course of time, the following products were added to the list of products, being developed completely In-House.

- Oil Sealed Rotary high Vacuum Pumps.
- Water-ring Vacuum Pumps.
- Vacuum Impregnation Systems.
- Hydraulic Press Brake & Shears.
- Special Purpose Hydraulic Presses.

In the year 1988, by positive encouragement from Dr. Damodar Modi, M.D. of M/s. Tirupati starch & chemicals Ltd. Indore, he ventured in to manufacturing of PEELER centrifuge, for the first time. Thus, first PEELER Centrifuge (Model 110H-Basket dia-1100 mm, Drive HP-50, Output-30 TPD of 36% Maize Starch) was commissioned. He along with Mr. K.J. Panchal started the unit, M/s. Whirler Centrifugals, to manufacture only centrifuges in various models.

During the course of existence till date, WHIRLER manufacture and market following products.

- Three Point Suspended-Manual Top Discharged (MTD) Centrifuges.
- Three Point Suspended, Lifting out filter bag (LB) Centrifuges.
- Three Point Suspended, Bottom Discharge (BD) Centrifuges.
- Horizontal Basket, Peeler Type (H) Centrifuges.
- Horizontal Basket, Pusher type (P) centrifuges.
- Top Suspended, Top driven, Bottom discharge (TSB) Sugar Centrifuges.
- Decanter type (D) centrifuges.
- Inverting filter bag type (INV) Centrifuges.
- Washing-in place type (WIP-MTD) Centrifuges.
- Nozzle type Liquid Liquid Separator (LSR) Centrifuges.

At Whirler the aim is to design & manufacture equipments to suit exact requirement of customer. Being precisely engineered and manufactured to exacting industrial standard, WHIRLER, equipments give long trouble free operating life, (as such the centrifuge supplied to M/s. Tirupati Starch and Chemicals-Indore is still running after 40+ years, giving trouble free operation).

## Our TimeLine



1978

Late Shri Rahul Patel, A Gold Medalist Mechanical Engineer, Started our journey with 2 employees and 1000 sq.ft Industrial space to manufacturer barrel pumps catering to local industry.



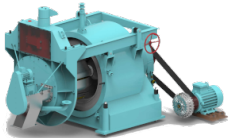
1980

We Started Manufacturing Range of Power Saving Soft Starting Fluid Couplings for high inertial load, First time indigenously developed and manufacturer in India, under the brand name PARAG.



1982

In the extension of vane type barrel pump, we started manufacturing and supplying Rotary Vane type Belt Driven Oil Sealed High Vacuum Pump catering to large and diverse dye, chemical and intermediate industry in Gujarat and India, under the brand name PARAG.



1987

We introduced Indigenously developed Peeler Centrifuge first time in India catering to then emerging Maize Starch Industry for the application of Maize Starch Dewatering. under the brand name of WHIRLER, We have supplied 150+ such machines in India, largest installation base of its kind.



1989

Partnering with Late Shri Kantilal Panchal, Whirler Centrifuge Manufacturing Company incorporated in to Whirler Centrifugals Pvt Ltd, and planned for introducing more innovative and efficient solid liquid separation solutions, with target of providing best in class products and services.



1992

In the extension of Peeler Centrifuge, we started manufacturing TSB Centrifuge for Glucose, DMH, Dextrose industry, again, first time in India. We have supplied 50+ such machines in India.



1993

We introduced Vertical Basket Centrifuges such as Lifting Bag Type, Bottom Discharge and Manual Top Discharge Centrifuges for the application of Dye, Intermediate, Pharma, Bulk Drugs Solid Liquid Separation, under the brand name of WHIRLER, We have supplied 1000+ such machines in India.



1994

we introduced pusher centrifuge, in both mechanical and hydraulic version, for continuous salt and crystalline product dewatering.



**WHIRLER**

**WHIRLER INTRODUCTION**

CREATED : 1983-11-16  
MODIFIED : 2025-03-17

**WHIRLER CENTRIFUGALS PVT LTD**

L605, GIDC, Odhav, Ahmedabad 382415, Gujarat, India.  
GST : 24AAACW1729R1ZX CIN : U29199GJ1990PTC014284



**2000**

In previous 5 years, we introduced all vertical and horizontal basket variations, many of it being first in the industry, for e.g. Reversing filter bag Centrifuge. Whirler became known brand and go-to company for solid liquid separation solution needs.



**2012**

By this time our product were being used in all corners of India, in all type of starch, chemical, dye, fertilizer and intermediate industry. We upgraded our manufacturing facility with higher space and better machines to cater to newer world.



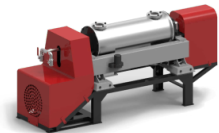
**2017**

We started exploring opportunity in Water treatment Industry, namely Sludge Dewatering and Drying in ETP, WTP and STP Plants, and soon established us as a leader for the same.



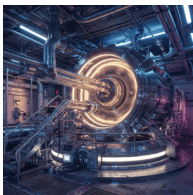
**2019**

For Catering need in small STP Sludge Dewatering in automated manner, Whirler introduced Self Cleaning Screw Press also started exporting the same, and soon reached to 50+ installations.



**2025**

We moved to new manufacturing facility during covid. Now total manufacturing area span over 50000 sq.ft with Introduction of state of the art machinery and equipments working day and night to manufacture and supply the best WHIRLER has to offer.



**future**

Rooted in family values and the vision of our founders, we're proud to be led by the third generation of entrepreneurs. We're committed to expanding globally, delivering top-quality products and services, and building strong relationships with our customers and partners. Thank you for your trust as we embark on this exciting new chapter.



# WHIRLER



45+ Years..

3 Plants

70+ Employees

10+ Product Line

250+ Vendors

1000+ Variations

2000+ Customers

## We The People



**Rahul Patel**  
Founder  
Production Engineer

Founding father of Whirler Centrifugals Pvt Ltd. His Design and Engineering acumen has shaped strong base on which whirler is currently standing and growing.



**Gopal Patel**  
Director  
Mechatronics Engineer

Second generation Director @ Whirler Centrifugals. With 20+ years of experience, Gopal is always looking for ways to improve Whirler's products services.



**Prakash Panchal**  
Director  
Production Engineer

Second generation Director @ Whirler Centrifugals. With 40+ years of experience in Production and Manufacturing of High Performance Centrifuges.



**WHIRLER**

**WHIRLER INTRODUCTION**

CREATED : 1983-11-16  
MODIFIED : 2025-03-17

**WHIRLER CENTRIFUGALS PVT LTD**

L605, GIDC, Odhav, Ahmedabad 382415, Gujarat, India.  
GST : 24AAACW1729R1ZX CIN : U29199GJ1990PTC014284

**Sales, Services & Customer Support**



**Laxit Valera**  
Sales  
Mechanical Engineer

40+ years of experience in Production, Sales & Marketing of Laundry Systems and Solid Liquid separation equipment and solutions.



**Nimesh Chauhan**  
Sales  
Mechanical Engineer

20+ years of experience in Technical Sales & Marketing of Wide variety of Vacuum Pumps, Systems and Solid Liquid separation equipment and solutions.



**Mihir Panchal**  
Sales  
Mechanical Engineer

10+ years of experience in Technical Sales & Marketing of Wide variety of solid liquid separation equipment and solutions.



**Chandresh Patel**  
Sales  
Mechanical Engineer

10+ years of experience in Technical Sales & Marketing of Wide variety of Laundry & Textile Machines.



**Sejal Mewada**  
Sales  
Mechanical Engineer

10+ years of experience in Corresponding & Customer Support for Vacuum Pumps, Systems, Laundry Machines and Centrifuges.



**Jayant Valera**  
Sales  
Mechanical Engineer

20+ years of experience in Technical Sales & Marketing of Wide variety of Vacuum Pumps & Vacuum Systems.

**Purchase, Planning, Production & Quality**



**Dilip Patel**  
Production  
Mechanical Engineer

40+ years of experience in Production and Machining of Wide Variety of Precision Products.



**Visaj Patel**  
Production  
Mechanical Engineer

10+ years of experience in Production & Service of Vertical and Horizontal Axis Basket Centrifuges.



**Vishal Patel**  
Production  
Mechanical Engineer

20+ years of experience in Production and Manufacturing of High Performance Centrifuges.



**Vinubhai Sarvaiya**  
Production  
Mechanical Engineer

40+ years of experience in Manufacturing and Service of Vacuum Pumps & Vacuum Systems.



**Jaikishan Pandya**  
Purchase  
Mechanical Engineer

10+ years of experience in Vendor Development, Procurement and Planning.



**Yash Patel**  
Production  
Mechanical Engineer

10+ years of experience in Manufacturing and Service of Laundry Machines, Screw Press and Dryers.

**Design & Development**



**Nilesh Pandya**  
Design  
Mechanical Engineer

30+ years of experience in Design and Development of Industrial Plant, Machinery & Centrifuges.



**Gopal Patel**  
Design  
Master CAD/CAM

20+ years of experience in Design and Development of High Performance Centrifuges.



## WHIRLER INTRODUCTION

CREATED : 1983-11-16  
MODIFIED : 2025-03-17

## WHIRLER CENTRIFUGALS PVT LTD

L605, GIDC, Odhav, Ahmedabad 382415, Gujarat, India.  
GST : 24AAACW1729R1ZX CIN : U29199GJ1990PTC014284

### Imprint

#### WHIRLER CENTRIFUGALS PVT LTD

##### Office

L605, GIDC, Odhav, Ahmedabad 382415, Gujarat, India

##### Works

13,14,18,19 Industrial Estate, Varsola, Mahemdabad, Kheda 387130, Gujarat, India.

##### Contact : Separation Division

+91 9426419038, +91 9909960911, +91 9033723683

##### Contact : Laundry Division

+91 9426387810

##### Contact : Vacuum Division

+91 8264365693, +91 9033039304

##### Email

info@whirlercentrifugals.com

##### GST

24AAACW1729R1ZX

##### CIN

U29199GJ1990PTC014284

##### Website

<https://www.whirlercentrifugals.com>

##### WhatsApp

<https://wa.me/919426419038>

##### Bank Details

BANK : HDFC Bank Limited. Maninagar Branch. BANK : IFSC : HDFC0000300 A/C. No. 03008630000322

BANK : SWIFT : HDFCINBBAHM

##### PAN

AAACW1729R

##### Disclaimer:

This transmission, contents and attachments contain information that is confidential and/or legally privileged and is intended for the exclusive use of the recipient. If you are not the intended recipient, please note that any dissemination, distribution, reproduction, copying or reliance on this transmission is strictly prohibited. By accessing this document we assume you accept the following terms and conditions. All intellectual property rights are reserved. You may access this document for your own personal use subjected to restrictions that are listed below. Republish material from this document. Reproduce, duplicate or copy material from this document. Redistribute content from this document. When you communicate with us, we may ask for your contact information, including details such as name, company name, address, email address, and telephone number. Such information may be used by WCPL for further correspondence. All the information on this document is published in good faith and for general information purpose only. We do not warrant the relevancy or completeness or accuracy of the information on this website. we will not be liable for any loss or damage of any nature.